

2024 annual report to the Community

Kidman Park Primary School

Kidman Park Primary School number: 996

Partnership: Western Adelaide Shores



School principal:

Amanda Walker

Date of endorsement:

17/02/2025



Government of South Australia
Department for Education

Context Statement

Kidman Park Primary School caters for students from R-6. At the time of this report, the enrolment in 2024 is 482. Kidman Park Primary School is classified as Category 5 on the Department for Education Index of Educational Disadvantage. At the time of this report, the school population includes 3% Aboriginal students, 10% students with disabilities, 9% students with English as an additional language or dialect (EALD) funded background. Further information about the school is available on the school's website (including its context statement), as well as the My School website.

Data Source: Department for Education data holdings from Mid census captured in AUGUST 2024.

Governing Council Report

In my capacity as Chair, representing the Governing Council, I extend my sincere gratitude to the entire Kidman Park Primary School Community for the unwavering support provided to the school throughout the year 2024.

Your unwavering support and enthusiasm have been instrumental in our success. From organizing events to spreading the word and participating in our initiatives, your commitment has made a significant difference in our school community. Together, we have not only raised funds but also strengthened our bonds and fostered a spirit of collaboration.

Thanks to your generosity, we are able to enhance our programs and resources, creating wonderful experiences for our students. It is inspiring to see how much we can achieve when we come together for a common purpose. Our annual Christmas in July quiz night was a huge success and such a fun night for all. Next year we hope to do it bigger and better. We had great success with the bunnings BBQ fundraiser, and we were happy to see so many members of our school community come and support the school.

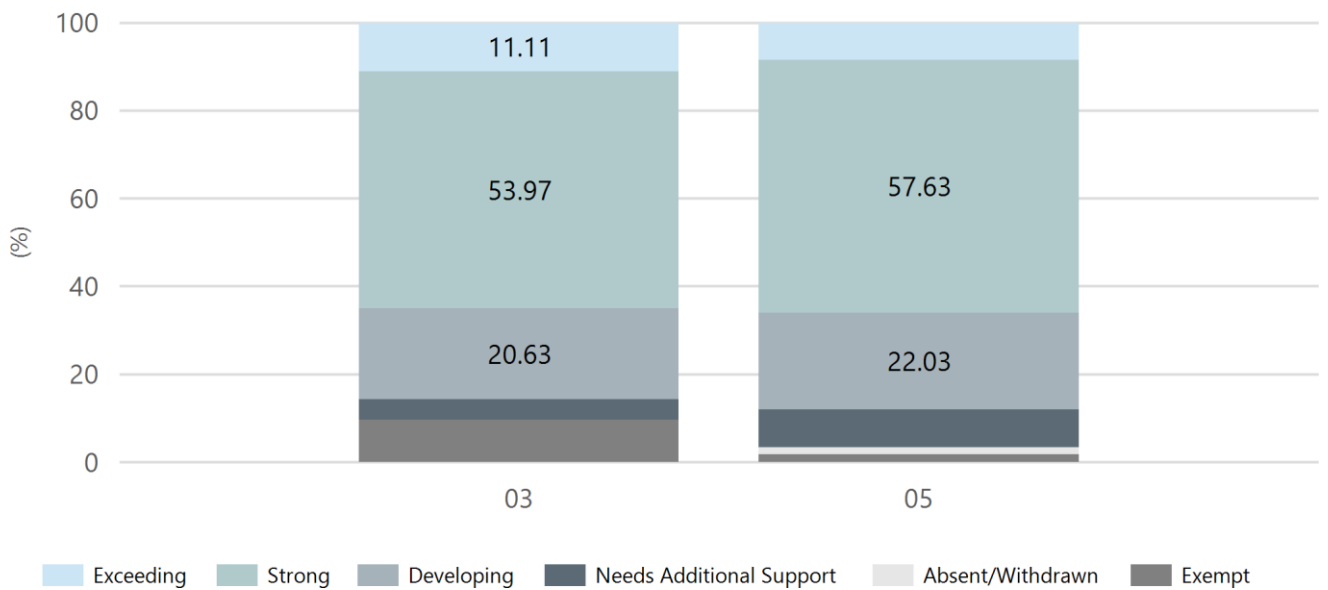
The events that happen at the school such as the Mothers and Father Day stalls take a lot of organising and preparation and our children wouldn't be able to have these events without the dedicated members of the Governing Council and Parents and Friends committee.

This year we had an increase in the number of volunteers and this has shown how our commitment to building the school community has succeeded.

Performance Summary NAPLAN Proficiency

In 2023 the Australian Curriculum, Assessment and Reporting Authority (ACARA) - a Commonwealth Independent statutory authority - announced changes to NAPLAN performance reporting. The new approach replaces the previous numerical NAPLAN bands and the national minimum standard.

Numeracy

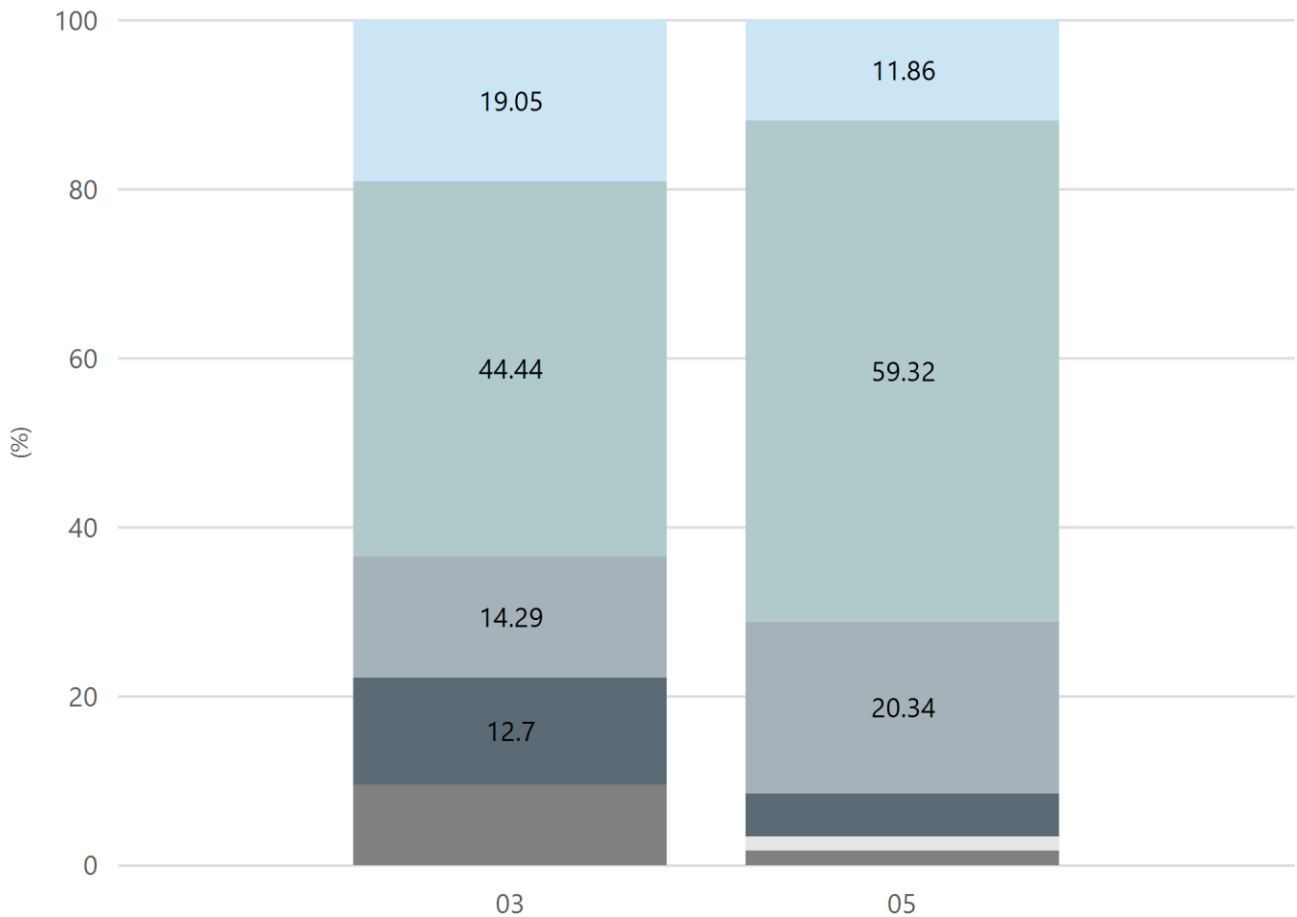


Year Level	03	05
------------	----	----

Exceeding	7	5
Strong	34	34
Developing	13	13
Needs Additional Support	3	5
Absent/Withdrawn		1
Exempt	6	1
Total	63	59

Data Source: Department for Education Assessment Data Holdings, 2024. If there are less than 6 students who sat NAPLAN in a school, no information will be shown. If a year level has less than 6 students, that year level will not be shown in NAPLAN results.

Reading

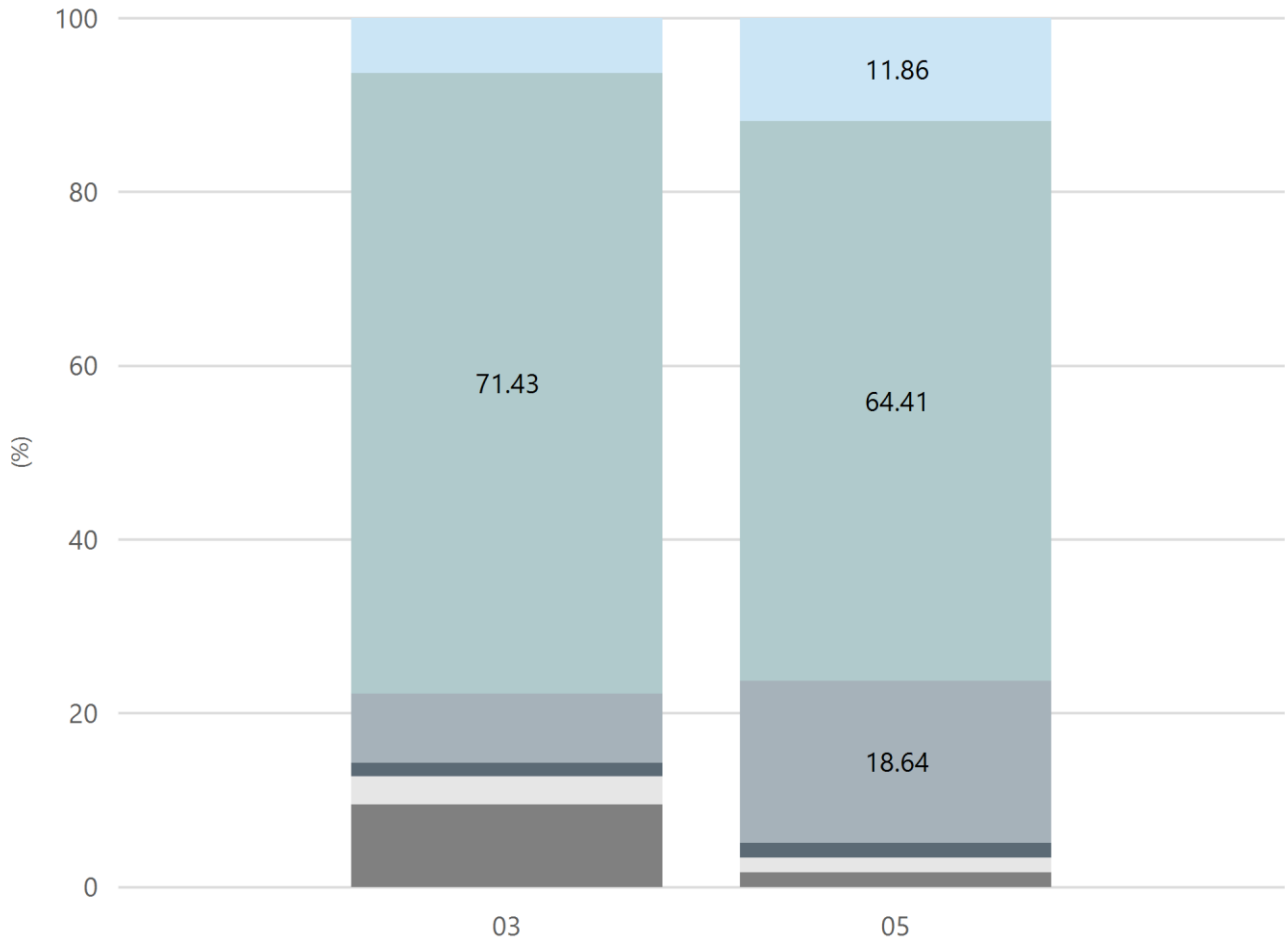


Exceeding Strong Developing Needs Additional Support Absent/Withdrawn Exempt

Year Level	03	05
Exceeding	12	7
Strong	28	35
Developing	9	12
Needs Additional Support	8	3
Absent/Withdrawn		1
Exempt	6	1
Total	63	59

Data Source: Department for Education Assessment Data Holdings, 2024. If there are less than 6 students who sat NAPLAN in a school, no information will be shown. If a year level has less than 6 students, that year level will not be shown in NAPLAN results.

Writing

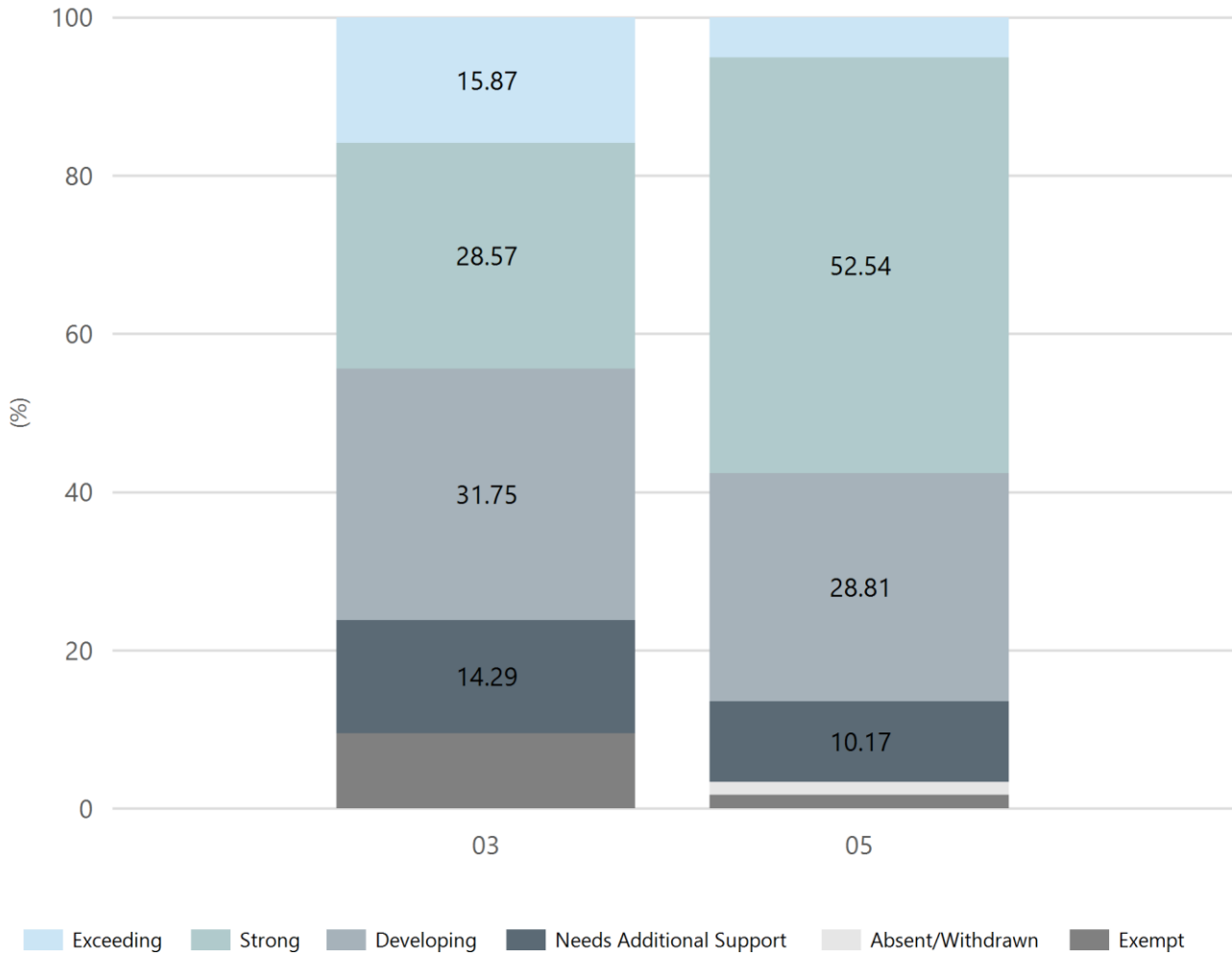


Exceeding Strong Developing Needs Additional Support Absent/Withdrawn Exempt

Year Level	03	05
Exceeding	4	7
Strong	45	38
Developing	5	11
Needs Additional Support	1	1
Absent/Withdrawn	2	1
Exempt	6	1
Total	63	59

Data Source: Department for Education Assessment Data Holdings, 2024. If there are less than 6 students who sat NAPLAN in a school, no information will be shown. If a year level has less than 6 students, that year level will not be shown in NAPLAN results.

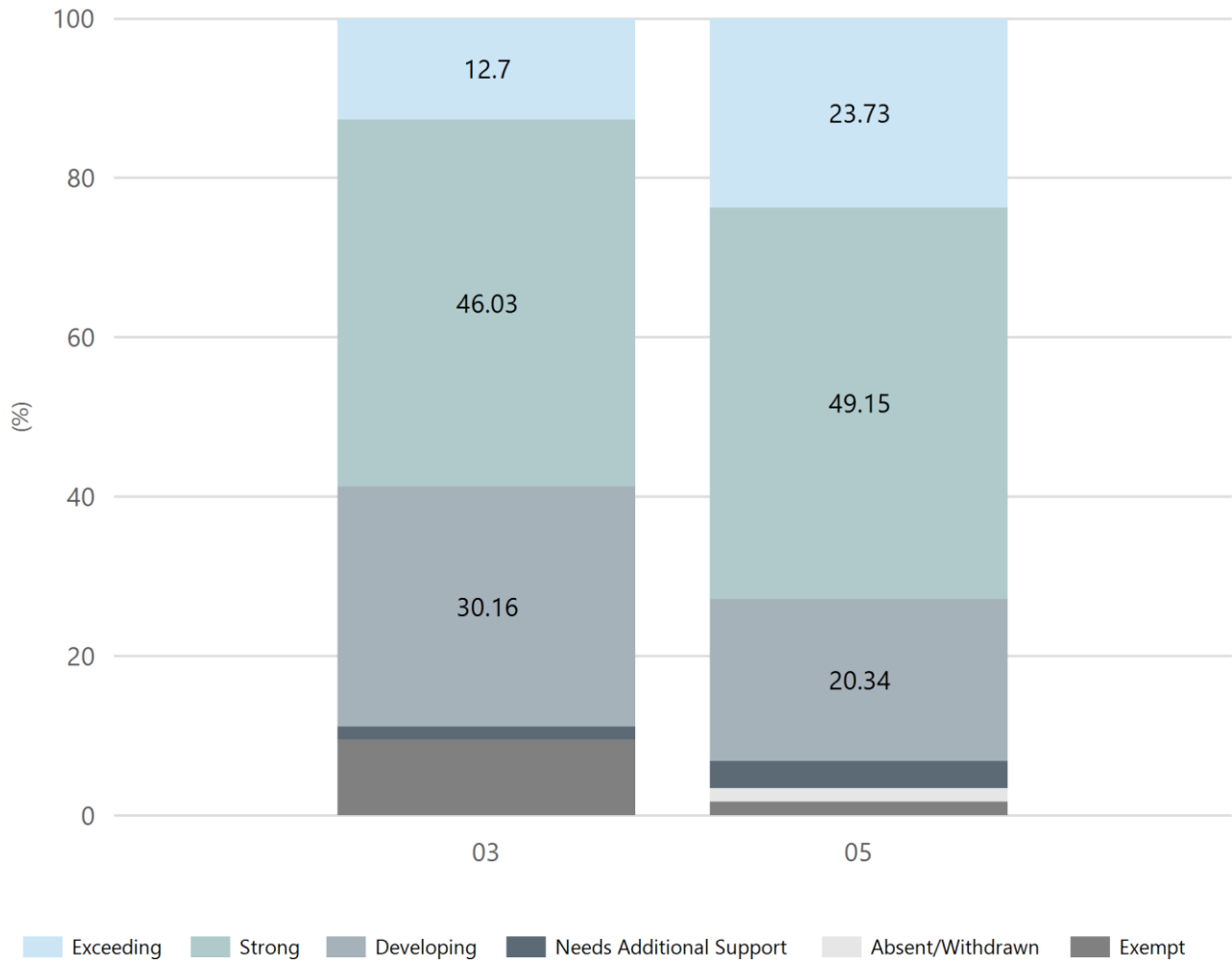
Grammar



Year Level	03	05
Exceeding	10	3
Strong	18	31
Developing	20	17
Needs Additional Support	9	6
Absent/Withdrawn		1
Exempt	6	1
Total	63	59

Data Source: Department for Education Assessment Data Holdings, 2024. If there are less than 6 students who sat NAPLAN in a school, no information will be shown. If a year level has less than 6 students, that year level will not be shown in NAPLAN results.

Spelling



Year Level	03	05
Exceeding	8	14
Strong	29	29
Developing	19	12
Needs Additional Support	1	2
Absent/Withdrawn		1
Exempt	6	1
Total	63	59

Data Source: Department for Education Assessment Data Holdings, 2024. If there are less than 6 students who sat NAPLAN in a school, no information will be shown. If a year level has less than 6 students, that year level will not be shown in NAPLAN results.

School Attendance

Year Level	2022	2023	2024
Reception	90.1%	91.1%	93.4%
Year 01	89.7%	93.2%	91.3%
Year 02	88.0%	91.0%	91.8%
Year 03	91.5%	91.6%	93.2%
Year 04	89.9%	90.4%	91.7%
Year 05	87.9%	88.0%	92.8%
Year 06	86.2%	90.3%	90.5%
Primary Other	81.5%	80.2%	73.4%
Total	88.9%	90.5%	91.4%

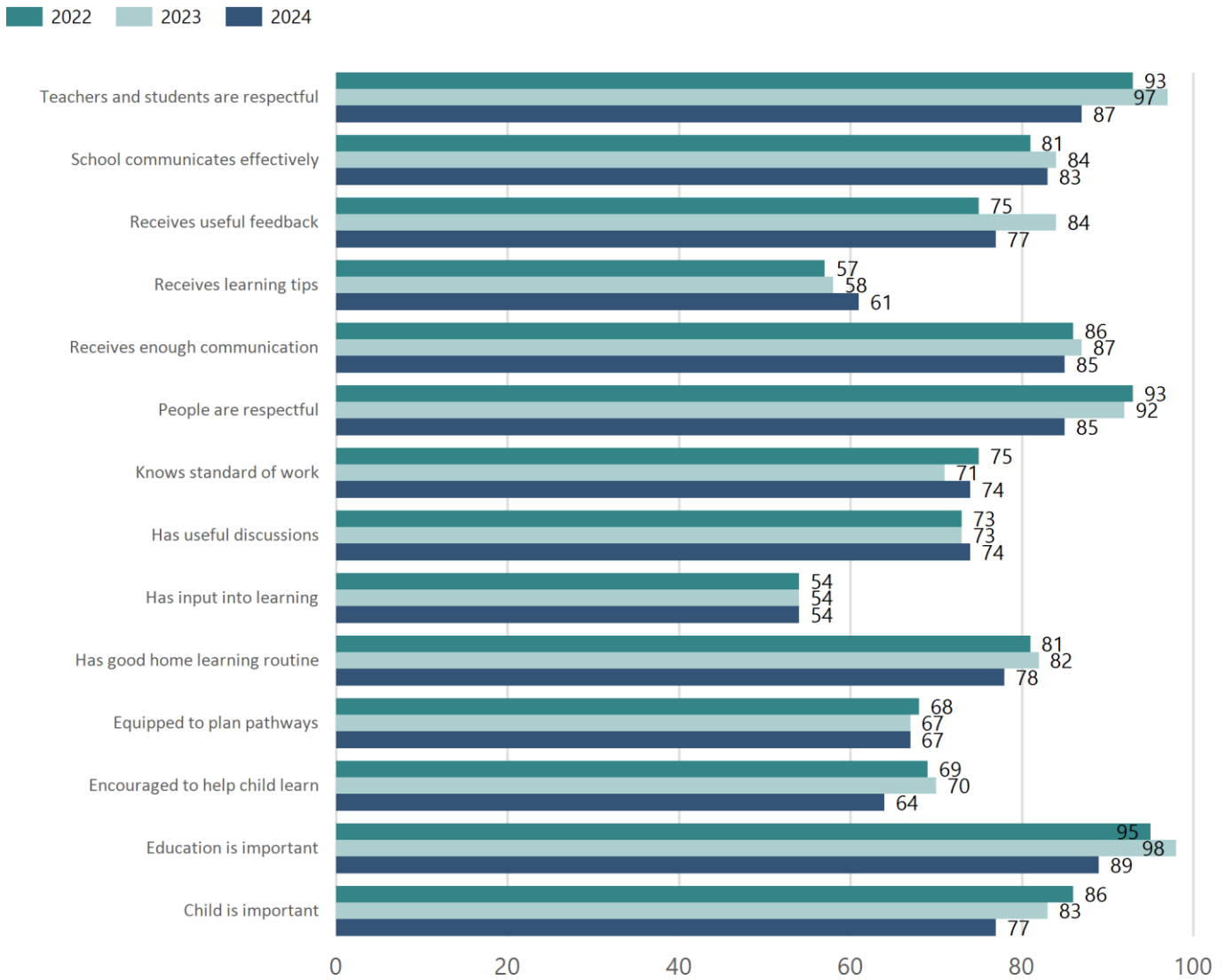
Data Source: Department for Education Attendance Data, Semester 1 Report 2024. A blank cell indicates there we no students enrolled. 'Primary Other' includes students enrolled in specialised education options. 'Secondary Other' includes students who have already spent a year at Year 12 and elected to undertake further study at Year 12.

Attendance Comment

In South Australia, all children and young people must be in school from 6 years to 16 years old. They must attend a government or non-government school full time. From age 16 to 17 however, young people must attend school or an approved learning program (such as an apprenticeship, traineeship, accredited course or university). Schools and parents must encourage and support students to come to school every day. Parents and caregivers must make sure their child is enrolled in a school, and attends school all day and everyday it is open, unless a child is sick or has an approved exemption. Teachers and leaders actively follow up when a student misses school, including recording all absences and non-attendance. All schools in South Australia have local attendance procedures governed under the Education and Children's Services Regulations 2020.

School Parent Opinion Survey Results

Proportion of agree/strongly agree response(%)



Data Source: 2024 Department for Education Parent Opinions Survey, Term 3 2024.

Intended Destination

Leave Reason	Number	%
NG - ATTENDING NON-GOV SCHOOL IN SA	2	20.0%
QL - LEFT SA FOR QLD	2	20.0%
TG - TRANSFERRED TO SA GOVERNMENT SCHOOL	3	30.0%
VI - LEFT SA FOR VIC	3	30.0%

Data Source: Department for Education Destination Data Report, 2024. Data extract term 3 2024. Data shows recorded destinations for students that left the school in the previous year. Data is uploaded by schools in term 3 and may not reflect final or total figures at time of report creation.

Highest Qualifications held by the teaching workforce and workforce composition. All teachers at this school are qualified and registered with the SA Teachers Registration Board.

Qualification Level	Number of Qualifications
Bachelor's degrees or Diplomas	26
Postgraduate Qualifications	10

Data Source: Data extracted from Mandatory Workforce Information Collections as on the last pay date of June 2024. As self-reported by staff in the system.

Please note: Data includes staff who are Actively employed and on extended paid leave. Please note only the highest qualification of the Teaching staff is reported. Excludes any number of other certifications earned.

Workforce composition including indigenous staff

	Teaching Staff		Non-Teaching Staff	
	Indigenous	Non-Indigenous	Indigenous	Non-Indigenous
Full-Time Equivalents	0.0	32.3	0.5	17.0
Persons	0.0	37.0	1.0	22.0

Data Source: Data extracted from Mandatory Workforce Information Collection as on the last pay date of June 2024.

Please note: Data includes staff who are actively employed and on extended paid leave. "Indigenous category" is self-reported by staff in the system.

Financial Statement

Funding Source	Amount
Grants: State	\$5,460,621.00
Grants: Commonwealth	\$4,714.00
Parent Contributions	\$136,835.00
Fund Raising	\$16,842.00
Other	\$975 (AFL Schools)

Data Source: School supplied data.